



## Faster Turn Around with Portable Appliance Tester

**Secondhand electrical items will be tested and out on the floor in the blink of an eye thanks to a new portable appliance tester (PAT) donated by ElectriNET.**

All electrical items sold in our shop are tested and tagged as safe, as required by law. For the past five years ElectriNET staff had done this for us, but their busy workload often meant items would pile up for weeks waiting. As part of ElectriNET's ongoing support they have very generously gifted a PAT and trained a number of staff and volunteers to use it. Being able to test in house means that the turn around for items will be a lot faster.



Hospice volunteer Josh Smellie and Mike Zame from ElectriNET checking the safety of a donated crockpot

Hospice Tairāwhiti are very thankful for the continued support we receive from ElectriNET, a member of the Horizon Energy Group. Read more about them here [www.electrinet.co.nz](http://www.electrinet.co.nz)

## Think When You Donate

Internet sensation Marie Kondo's approach of getting rid of things that don't bring you joy has had a positive spin-off for our Hospice Shop with record numbers of donations being received over the summer months. And while we are grateful for these donations Hospice Shop manager Brenda Kinder is asking people to give some thought to what they are donating.



Shop Manager Brenda Kinder disposing of a bag of items that can't be sold

"The majority of donations we receive are good quality, but there are some that we just can't sell. It costs us over \$10,000 a year to dispose of unsuitable donations and this is precious money that could be used for patient care" says Brenda.

So please, keep donating – we really need and appreciate your items – but before you pop that item in your donation bag ask yourself: does it work; is it broken; is it outdated; would I or someone I know buy this from a charity shop?

You can find a list of specific items we do not accept on our website [www.hospicetairāwhiti.org.nz/get-involved/hospice-shop](http://www.hospicetairāwhiti.org.nz/get-involved/hospice-shop)

'Turning second hand goods into first class care'. 🌟





Cynthia Hanover

## Volunteer Profile: Cynthia Hanover

**When you have had family members cared for by Hospice it does make you think, how can I give back and make a difference in someone else's end of life care?**

Cynthia trained as a hairdresser in Hawkes Bay but has spent many of her years in Gisborne. Working for herself these days enables her to volunteer her time to do the things she is passionate about, with hospice being one of them.

Volunteering for hospice is an easy thing to do, "I love the contact with people" said Cynthia. Cynthia helps with fundraising

events, raffles, but particularly enjoys the patient support part of the volunteer services. "Being able to sit down and just listen to people's stories is fascinating" Cynthia said. Having been a hairdresser all her life makes a difference, talking to people and making them feel comfortable just comes naturally.

Cynthia is also our on-call hairdresser if patients are needing a little pampering and are unable to go out. "I like being able to help people because you never know it could be me needing that help one day". 🙌

## Staff Profile:

**Jacqui Ritchie:  
Assistant Manager**

**I moved to Gisborne eight years ago with my partner and our two children. We love the small community feel, the friendliness and the beautiful coast.**

My working background is in early childhood education but about 5 years ago I decided I needed a change and I am loving the new direction and the different challenges that working at the hospice shop brings.

My role as part time assistant manager is to support Brenda in whatever she needs to run the shop. This includes organising volunteers and filling shifts, helping at hospice shop fashion shows and other fundraising

events, helping customers, organising donation collection, sorting and processing donations, and really anything else that needs doing.

I particularly like the people aspect of the job and have met a lot of interesting people and learned a lot about Tairāwhiti and its history.

I'm also very keen on the idea of recycling and re-using things and that is obviously a huge part of shops like ours. Customers often buy things in order to repurpose them for art and craft or practical purposes. "I love that, something that might have been thrown away will now go on to have another useful life.

Hospice Tairāwhiti is an amazing organisation and I am proud to be part of it. 🙌



Jacqui Ritchie



## Thank You

**Thank you to the following groups and individuals who have assisted Hospice Tairāwhiti recently with grants, donations and bequests of over \$500**

- Mangatāwa Beale Williams Memorial Trust
- Sunrise Foundation
- BNI Gisborne
- Hikurangi Forest Farms
- Farmers Trading Group

- Te Wananga O Aotearoa
- Sport Gisborne
- Dorothea Zimmermann
- John Kingi
- Marianne Grob





Volunteers Pam Covell, Dulcie McCutcheon, Mary Campbell and Clare Elliott

## Happy Hospice Volunteers

**It always nice to celebrate another great year and say thank you to our many wonderful volunteers, with good food, great company and gorgeous people.**

Volunteer coordinator Jane Kibble organises a fun filled afternoon of food, drink, prizes

and lots of laughter. It gives Hospice a chance to say thank you for the commitment and loyalty volunteers show throughout the year and gives volunteers the opportunity to get together and share their volunteering experiences.

Hospice volunteers work across a number of areas including youth ambassadors, hospice shop, patient support, biography, office receptions, and events, so it's fantastic to get them all together and celebrate as one.

Hospice Tairāwhiti could not provide the services they do without the help of volunteers. If you would like to join this great team on volunteers, please contact volunteer coordinator Jane Kibble, [jane@hospicetairawhiti.org.nz](mailto:jane@hospicetairawhiti.org.nz) or phone 8690552 🍌

## Remembering our Loved ones'

**For five years now, Farmers have been supporting Hospice through the Tree of Remembrance.**

The campaign allows people to make a donation to hospice and to write and place a special message to loved ones on the tree instore.

We were delighted to be working with new store manager Karen Morris and assistant manager Kylie Harding this year. Over the duration of the campaign \$776,607.36 was raised to support hospices nationally.

Hospice Tairāwhiti received \$4,050.92, the total amount raised through our local Farmers Store. The wonderful thing about this campaign is when you make your donation to your local store you know that 100% of it is going to help your local community.



Karen Morris and Kylie Harding from Farmers present Hospice Funding & PR Cordinator Kelly Simpson, and Hospice Board Chair Barry Atkinson with a cheque for the funds raised locally

Thank you to Farmers and our community for making this campaign so successful and helping to keep hospice services free of charge. 🍌

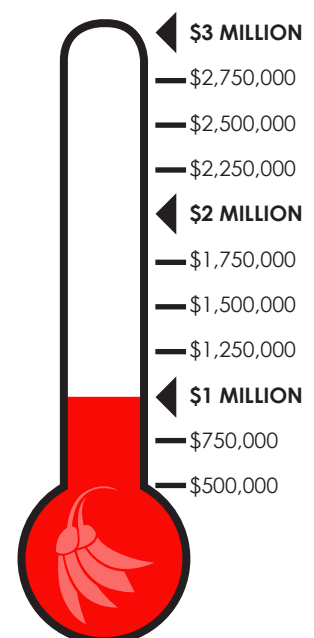


**Future home of**

**hospice**  
**Tairāwhiti**

*Help us build a space to meet the growing needs of our community.*

**for more information or donate go to...**  
**[www.hospicetairawhiti.org.nz](http://www.hospicetairawhiti.org.nz)**





# Jax Hamilton

## 13 May 2019

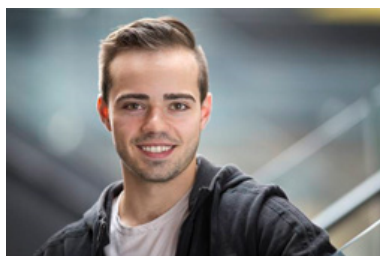
Proudly sponsored by  
**Harcourts**



**\$35** per ticket Starting at 6:30pm

Tickets available from Hospice Shop and Hospice Office  
Contact the Hospice office for more information 06 869 0552

## Hospice Long Lunch



*The Vines*

**Sunday 31st  
March 2019**

**11:30 am – 2:30 pm  
\$65 per ticket**

Tickets available from  
Hospice Shop – 66 Peel Street, Hospice Office & The Vines  
All proceeds to Hospice Tairawhiti

With guest speaker **Jake Bailey**, a beautiful lunch, pre-release top notch winter fashion show & live music.

Proudly sponsored by



## The Pop Up Cafe

The Pop Up Cafe will be back again this year during hospice week.

It was such a success last year we have decided to do it again.

**Hospice Week 13 - 20 May**

**Pop up cafe**  
Inside the Hospice Shop Peel Street

**Open Hours: 10am to 2pm  
Monday to Friday**

